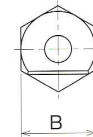
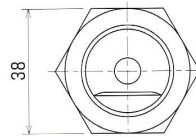
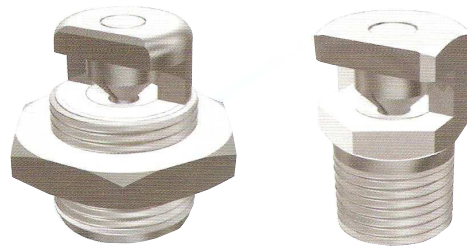




# SCJ Self Cleaning Nozzle

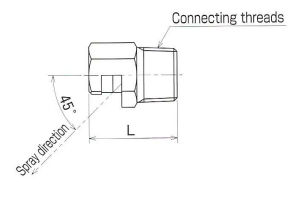
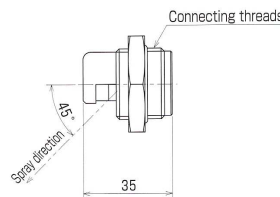
The SCJ self-cleaning nozzle is used for the high-pressure washing of wires and felts, the washing of wire rolls and doctors, and in white water spraying facilities.

If the nozzle becomes blocked with foreign matter, the orifice can open wider by the reduction in spray pressure to 0.03 bar, hence blockages can be removed without detaching the nozzle.



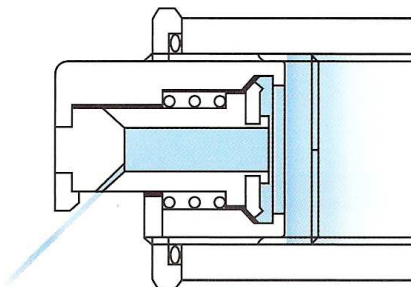
## Construction

Constructed entirely of SS303 or SS316.

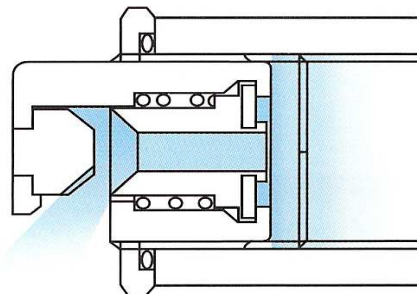


Model	Connecting threads	Weight (g)	Dimension (mm)		Connecting threads	Weight (g)
			B	L		
SCJ	G $\frac{3}{4}$ $\phi 28$ , 20 threads	130				
$\frac{1}{2}$ SCJ			22	35	R $\frac{1}{2}$	75
$\frac{3}{4}$ SCJ			27	35	R $\frac{3}{4}$	120

**Under normal operation  
(at increased pressure)**



**When cleaning foreign matter**



Model	Model number	Equivalent orifice diameter (mm)	Flow rate lpm @ bar								
			1	3	5	7	10	20	30	40	50
SCJ	0.5	0.5	0.16	0.28	0.37	0.43	0.52	0.73	0.90	1.04	1.16
	0.6	0.6	0.24	0.41	0.53	0.63	0.75	1.06	1.30	1.50	1.08
	0.7	0.7	0.32	0.56	0.72	0.85	1.02	1.45	1.77	2.0	2.3
	0.8	0.8	0.42	0.73	0.94	1.12	1.33	1.89	2.3	2.7	3.0
	0.9	0.9	0.56	0.98	1.26	1.49	1.78	2.5	3.1	3.6	4.0
	1.0	1.0	0.66	1.14	1.47	1.74	2.1	2.9	3.6	4.2	4.6
	1.2	1.2	0.95	1.64	2.1	2.5	3.0	4.2	5.2	6.0	6.7
	1.5	1.5	1.48	2.6	3.3	3.9	4.7	6.6	8.1	9.4	10.5