

C5 BOCCELLO AD ARIA E VAPORE AIR AND STEAM TIP PUNTA PARA AIRE Y VAPOR

Caratteristiche

Bocchello intercambiabile per spruzzo di aria o vapore, assemblabile con gli accessori.

Applicazioni

- Asciugatura.
- Raffreddamenti.
- Pulizia.
- Asportazione polveri.

Materiale

Ottone, Aisi303, Aisi316L, altri materiali a richiesta.

Characteristics

Interchangeable spray tip to use with air or steam, can be assembled with accessories.

Applications

- Drying.
- Cooling.
- Clearing.
- Dust removal.

Material

Brass, SS303, SS316L, other materials on request.

Características

Punta con orificio intercambiabile, para pulverización de aire o de vapor, se puede montar con los accesorios.

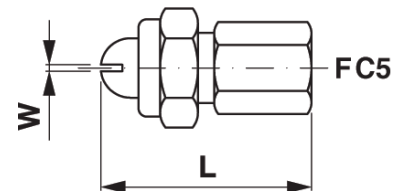
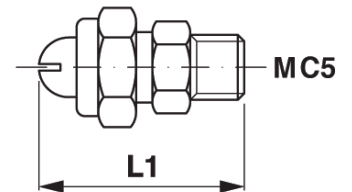
Aplicaciones

- Secado.
- Enfriamiento.
- Limpieza.
- Eliminación de polvo.

Material

Latón, Aisi303, Aisi316L, otros materiales bajo pedido.

C5



Dimensions (mm)

Connection	L	L1	L2
1/4"	46,0	48,0	34,0
3/8"	46,0	48,0	45,0

Type of nozzle		w mm	Pressure (Bar)								bar	
			0,7	2	4	6	1	2	4	7	1	4
			Air (l/min)				Steam (Kg/h)				<°	<°
1/4 F - C5 - 1	1/4 M - C5 - 1	0.20	21	38	65	101	0.7	1.4	2.2	3.60	65	85
1/4 F - C5 - 2	1/4 M - C5 - 2	0.38	40	60	100	152	1.5	2.0	3.5	5.50	70	80
1/4 F - C5 - 3	1/4 M - C5 - 3	0.58	77	110	190	305	2.8	4.1	6.7	11.5	80	80
1/4 F - C5 - 4	1/4 M - C5 - 4	1.1	131	199	345	540	4.5	7.2	12.3	19.4	70	70
1/4 F - C5 - 5	1/4 M - C5 - 5	1.4	210	335	570	881	7.50	12.0	20.3	32.1	60	70
1/4 F - C5 - 6	1/4 M - C5 - 6	2.3	430	700	1150	1724	15.5	25.0	42.0	63.0	60	70
3/8 F - C5 - 1	3/8 M - C5 - 1	0.20	21	38	65	101	0.7	1.4	2.2	3.60	65	85
3/8 F - C5 - 2	3/8 M - C5 - 2	0.33	40	60	100	152	1.5	2.0	3.5	5.50	70	80
3/8 F - C5 - 3	3/8 M - C5 - 3	0.58	77	110	190	305	2.8	4.1	6.7	11.5	80	80
3/8 F - C5 - 4	3/8 M - C5 - 4	1.1	131	199	345	540	4.5	7.2	12.3	19.4	70	70
3/8 F - C5 - 5	3/8 M - C5 - 5	1.4	210	335	570	881	7.50	12.0	20.3	32.1	60	70
3/8 F - C5 - 6	3/8 M - C5 - 6	2.3	430	700	1150	1724	15.5	25.0	42.0	63.0	60	70

CD3
UGELLO AD ARIA E VAPORE
AIR AND STEAM NOZZLE
BOQUILLA PARA AIRE Y VAPOR



Caratteristiche

Ugello a corpo unico per spruzzo di aria o vapore.

Characteristics

One piece nozzle to use whit air or steam.

Características

Boquilla de una sola pieza para pulverización de aire o de vapor

Applicazioni

- Asciugatura.
- Raffreddamenti.
- Pulizia.
- Asportazione polveri.

Applications

- Drying.
- Cooling.
- Clearing.
- Dust removal.

Aplicaciones

- Secado.
- Enfriamiento.
- Limpieza.
- Eliminación de polvo.

Materiale

Ottone, Aisi303, Aisi316L, altri materiali a richiesta.

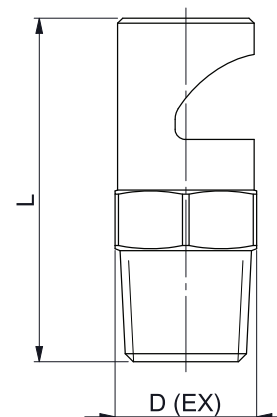
Material

Brass, SS303, SS316L, other materials on request.

Material

Latón, Aisi303, Aisi316L, otros materiales bajo pedido.

CD3



Dimensions (mm)

Connection	D(EX)	L
1/8"	11,0	31,0
3/8"	17,0	44,0

Type of nozzle	Ø 1 mm	Pressure (Bar)										bar	
		0.7	1.5	2	3	3.5	0.7	1.5	2	3	3.5	0.7	3.5
		Air (l/min)					Steam (Kg/h)					<°	<°
1/8 - CD3 - 0.50	0.6	4.5	6.5	7.6	10.5	11.5	0.15	0.23	0.26	0.37	0.40	17	39
1/8 - CD3 - 0.75	0.75	6.1	9.0	10.8	14.7	16.6	0.23	0.33	0.39	0.52	0.60	20	44
1/8 - CD3 - 1	0.8	9.50	13.7	16.5	22.0	25.0	0.35	0.50	0.59	0.80	0.91	23	48
1/8 - CD3 - 1.5	1.0	15.3	22.0	26.0	36.0	40.0	0.55	0.78	0.95	1.30	1.50	25	51
1/8 - CD3 - 2	1.2	19.3	28.0	33.0	45.0	51.0	0.68	1.10	1.25	1.60	1.80	32	55
1/8 - CD3 - 3	1.4	31.0	46.0	55.0	77.0	85.0	1.10	1.70	2.00	2.70	3.10	33	60
1/8 - CD3 - 5	1.9	54.0	76.0	91.0	125	139	1.90	2.70	3.30	4.50	5.00	39	64
1/8 - CD3 - 7.5	2.3	80.0	117	140	190	210	3.00	4.10	5.00	6.80	7.50	39	68
1/8 - CD3 - 10	2.6	110	160	190	255	290	3.90	5.70	6.80	9.20	10.5	39	70
1/8 - CD3 - 15	3.3	180	261	310	420	475	6.50	9.30	11.2	15.0	17.1	41	72
1/8 - CD3 - 18	3.6	205	300	355	458	540	7.50	10.6	12.7	17.5	19.6	44	74
1/4 - CD3 - 20	3.6	225	325	386	520	590	8.10	11.5	13.7	18.7	20.9	46	78
3/8 - CD3 - 30	4.6	320	465	560	760	850	11.5	16.8	20.0	27.0	30.0	53	81
3/8 - CD3 - 40	5.3	440	640	760	1050	1160	15.7	22.8	27.0	36.8	42.0	58	85