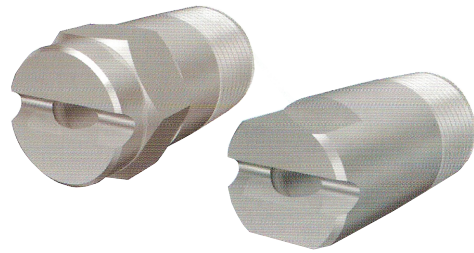


KSHR Flat Spray Nozzles

The multi-purpose KSHR flat spray nozzle can be used for the cooling of rolls, steel sheets and billets etc, the spraying of chemicals, and dust prevention and de-foaming. It also has various washing purposes.



Specification

Wider spray angle than other flat spray nozzles (16° to 20° across the spray thickness).

Clog resistant

Construction

Brass or 303ss



Thread	Model number	Model			Minimum orifice diameter (mm)	Flow rate l/min @ bar							Spray angle @ bar				
		R threads		Rc threads		1	2	3	5	7	10	15	1	2	3	5	10
		KSR	KSHR	KSHR-H													
1/4"	0265	•	•	•	0.8	1.15	1.63	2.0	2.6	3.1	3.7	4.5	52°	61°	65°	70°	72°
	0280	•	•	•	0.7	1.15	1.63	2.0	2.6	3.1	3.7	4.5	62°	72°	80°	87°	91°
	0365	•	•	•	1.2	1.73	2.5	3.0	3.9	4.6	5.5	6.7	52°	61°	65°	70°	72°
	0380	•	•	•	1.0	1.73	2.5	3.0	3.9	4.6	5.5	6.7	62°	72°	80°	87°	91°
	0465	•	•	•	1.5	2.3	3.3	4.0	5.2	6.1	7.3	8.9	54°	62°	65°	70°	72°
	0480	•	•	•	1.2	2.3	3.3	4.0	5.2	6.1	7.3	8.9	64°	73°	80°	87°	91°
	0665	•	•	•	1.9	3.5	4.9	6.0	7.8	9.2	11.0	13.4	54°	62°	65°	70°	72°
	0680	•	•	•	1.6	3.5	4.9	6.0	7.8	9.2	11.0	13.4	67°	77°	80°	83°	86°
	0865	•	•	•	2.1	4.6	6.5	8.0	10.3	12.2	14.6	17.9	56°	63°	65°	68°	70°
0880	•	•	•	1.8	4.6	6.5	8.0	10.3	12.2	14.6	17.9	69°	77°	80°	83°	84°	
3/8"	1065	•	•	•	2.6	5.8	8.2	10.0	12.9	15.3	18.3	22.4	56°	63°	65°	68°	70°
	1080	•	•	•	1.9	5.8	8.2	10.0	12.9	15.3	18.3	22.4	70°	78°	80°	83°	84°
	1565	•	•	•	3.0	8.7	12.2	15.0	19.4	22.9	27.4	33.5	56°	63°	65°	68°	70°
	1580	•	•	•	2.7	8.7	12.2	15.0	19.4	22.9	27.4	33.5	70°	78°	80°	83°	84°
	2065	•	•	•	3.6	11.5	16.3	20.0	25.8	30.6	36.5	44.7	57°	63°	65°	68°	70°
	2080	•	•	•	3.3	11.5	16.3	20.0	25.8	30.6	36.5	44.7	73°	78°	80°	82°	83°
	2565	•	•	•	4.0	14.4	20.4	25.0	32.3	38.2	45.6	55.9	57°	63°	65°	68°	70°
	2580	•	•	•	3.5	14.4	20.4	25.0	32.3	38.2	45.6	55.9	73°	78°	80°	81°	82°
1/2"	3065	•	•	•	4.4	17.3	24.5	30.0	38.7	45.8	54.8	67.1	57°	63°	65°	68°	70°
	3080	•	•	•	3.8	17.3	24.5	30.0	38.7	45.8	54.8	67.1	73°	78°	80°	81°	82°
	4065	•	•	•	5.0	23.1	32.7	40.0	51.6	61.1	73.0	89.4	57°	63°	65°	68°	70°
	4080	•	•	•	4.7	23.1	32.7	40.0	51.6	61.1	73.0	89.4	75°	78°	80°	81°	81°
3/4"	5065	•	•	•	5.8	28.9	40.8	50.0	64.5	76.4	91.3	112	57°	63°	65°	68°	70°
	5080	•	•	•	5.2	28.9	40.8	50.0	64.5	76.4	91.3	112	75°	78°	80°	81°	81°
	6065	•	•	•	6.5	34.6	49.0	60.0	77.5	91.7	110	134	57°	63°	65°	68°	70°
	6080	•	•	•	5.8	34.6	49.0	60.0	77.5	91.7	110	134	75°	78°	80°	81°	81°
1"	7565	•	•	•	7.0	43.3	61.2	75.0	96.8	115	137	168	57°	63°	65°	68°	70°
	7580	•	•	•	6.3	43.3	61.2	75.0	96.8	115	137	168	75°	78°	80°	81°	81°