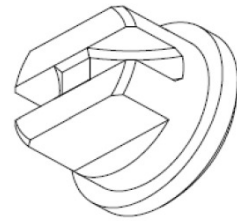


C1 0017 FLAT SPRAY TIP

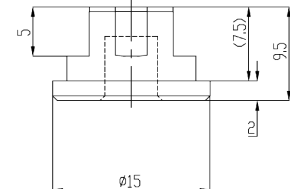
The C1 0017 flat spray nozzles produces an even spray with tapered edges, needing overlapping for uniform coverage.

One of the smallest flow rates available in tip format

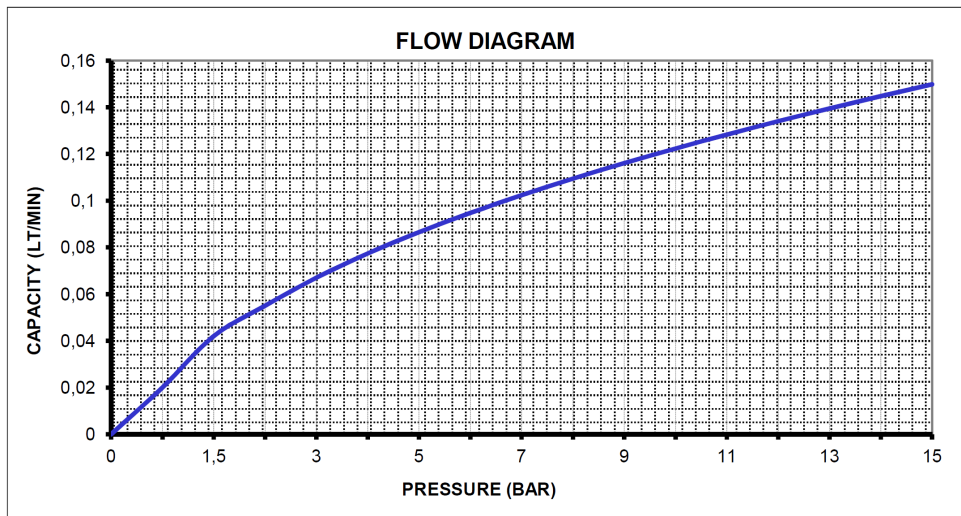
They are to be used in conjunction with HG bodies and



Spray angle	On demand
Spray tolerance	±3%
Dimension allowance	±0.2
Dimensions	see drawing
Flow rate	0.06 lpm @ 3 bar
Connection	With HG bodies and caps
Filter / check valve	On demand
Free passage	0.28mm



Ref	Equiv. orifice Dia mm	FLOW RATES Ltrs/min @ bar G										SPRAY ANGLES @ 3.0 Bar. G								
		1.5	2	3	4	5	6	7	10	15	0	15	25	40	50	65	80	90	110	
0017	0.28	0.04	0.05	0.06	0.07	0.08	0.09	0.1	0.13	0.16										



HG Caps & Bodies

CAP SPECIFICATION

- ⇒ For use with HG bodies
- ⇒ Available in 303ss & 316 st.st



BODY SPECIFICATION

- ⇒ To be used with flanged tips from the ICS standard range
- ⇒ Suitable for use with HG caps
- ⇒ Available in 303ss & 316 st.st
- ⇒ 1/4" and 1/8" Thread sizes are male BSP,
- ⇒ 1/4" female BSP thread available

