

# MC4 / C4

## High pressure flat spray nozzle or tip



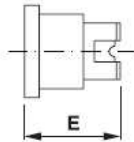
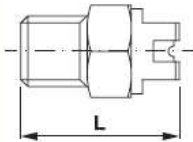
The MC4/C4 is a high pressure, high impact flat or solid spray nozzle used for cleaning and washing.

The surface of the nozzle is specially treated, and the orifice is recessed for minimum wear.



1/4MC4

C4



Ø	L	E
1/4"	24mm	
		16mm

C4 to be used with HG bodies & caps

model	1/4" MC4 15° 25° 40° 50° 65°	C4 0°	C4 15° 25° 40° 50°	Ø1 mm	Flow lpm @ bar							
					20	40	60	80	100	120	150	200
015		•		0.80	1.5	2.1	2.6	3.0	3.4	3.7	4.1	4.8
02		•	•	0.90	2.0	2.8	3.5	4.0	4.5	4.9	5.5	6.3
03		•	•	1.10	3.1	4.3	5.3	6.2	6.8	7.4	8.3	9.6
035		•	•	1.15	3.6	5.1	6.2	7.3	8.1	8.8	9.9	11.4
04		•	•	1.20	4.2	5.9	7.1	8.2	9.2	10.0	11.2	13.0
045		•	•	1.30	4.5	6.4	7.8	9.0	10.2	11.1	12.5	14.4
05		•	•	1.35	5.1	7.2	8.7	10.2	11.4	12.5	14.0	16.0
055		•	•	1.40	5.5	7.8	9.5	11.0	12.4	13.5	15.0	17.5
06		•	•	1.50	6.0	8.5	10.5	12.2	13.8	15.0	17.0	19.5
065		•	•	1.55	6.6	9.3	11.4	13.2	14.7	16.0	18.0	20.7
07		•	•	1.60	7.0	10.0	12.4	14.3	16.0	17.6	20.0	22.6
075		•	•	1.65	7.6	10.7	13.0	15.2	17.0	18.6	20.8	24.0
08		•	•	1.70	8.1	11.6	14.2	16.6	18.5	20.2	23.0	26.0
085		•	•	1.75	8.5	12.2	14.9	17.3	19.2	21.0	23.5	27.0
09		•	•	1.80	9.1	12.8	15.7	18.0	20.0	22.0	24.5	28.2
10		•	•	1.90	10.0	14.2	17.4	20.0	22.5	25.0	28.0	32.0
25	•			3.00	25.0	35.7	44.0	50.5	56.5	61.8	69.0	80.0
30	•			3.30	30.0	43.0	52.5	60.5	67.8	74.2	83.0	95.5
40	•			3.80	40.0	57.0	70.0	81.0	90.0	98.5	110	127
50	•			4.20	50.5	72.0	87.5	100	112	122	137	158
60	•			4.70	60.0	86.0	105	121	136	149	166	192